

Signal Peak and Randolph 190

SWC of Signal Peak and Randolph Roads | Pinal County, AZ

www.willisproperty.com

Exclusively Presented By

Ryan Willis

480.507.6200

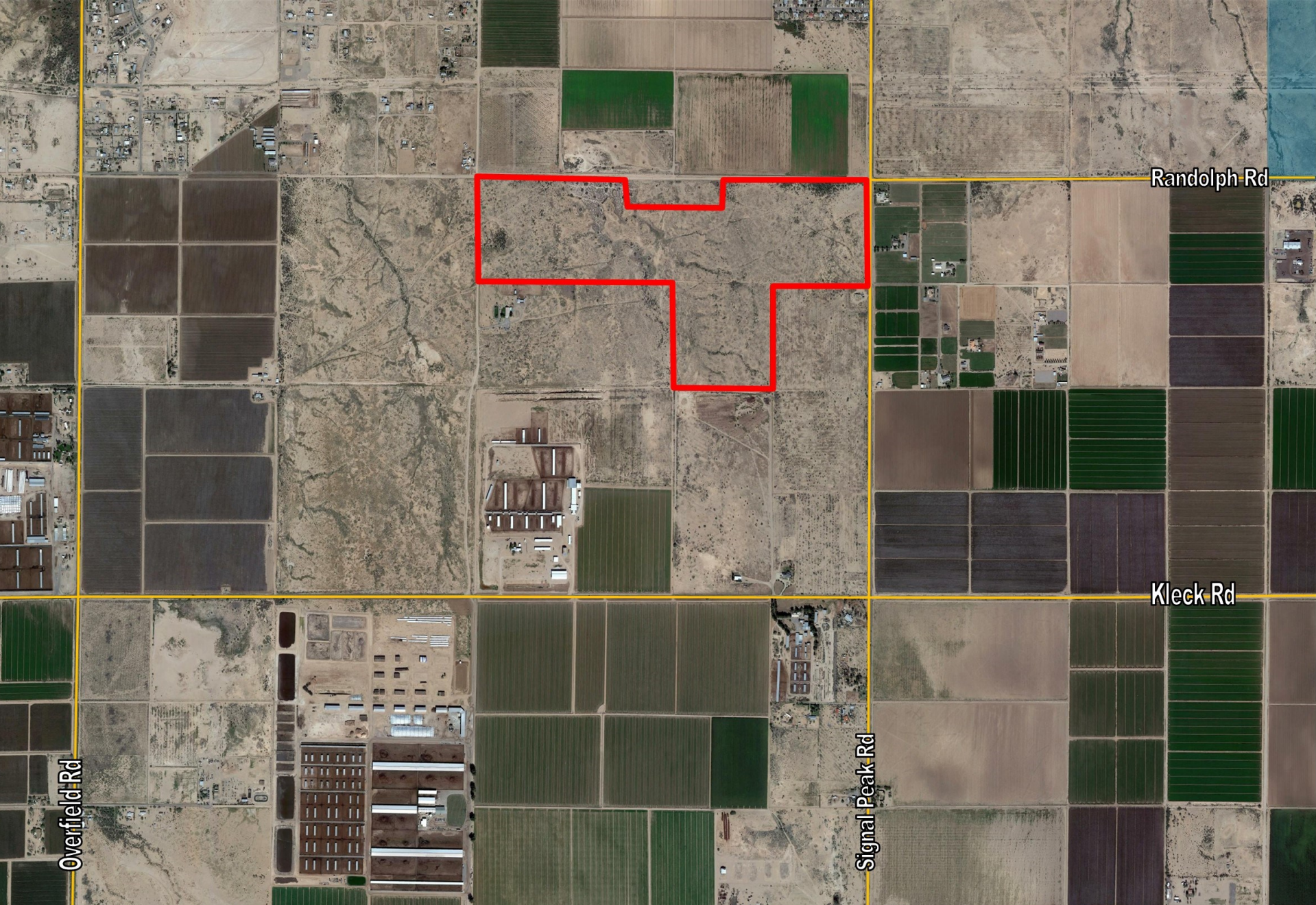
ryan@willisproperty.com

3850 E. Baseline Road, Ste. 118
Mesa, Arizona 85206

WILLIS

PROPERTY | COMPANY

SITE AERIAL 1

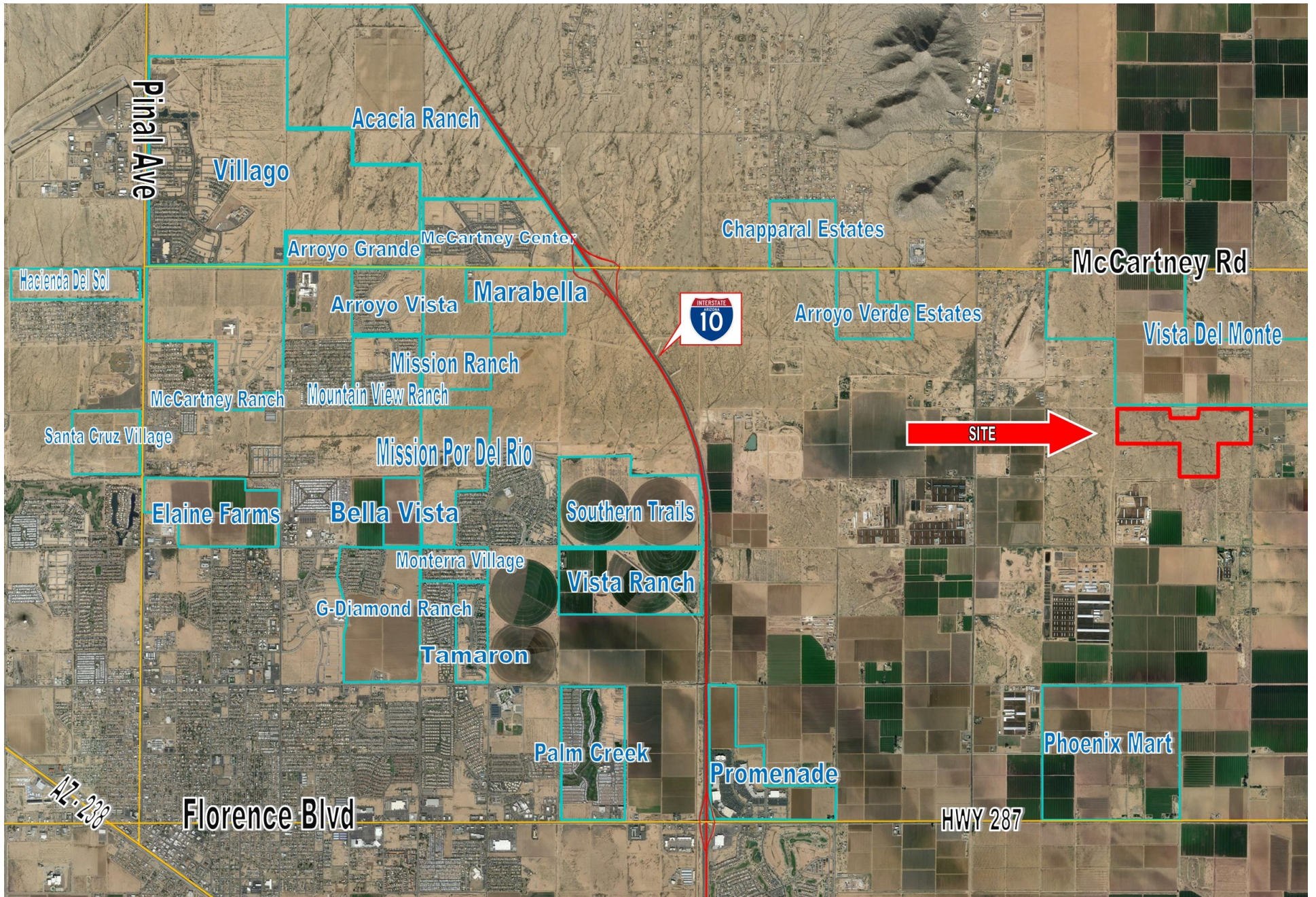


PROPERTY DESCRIPTION

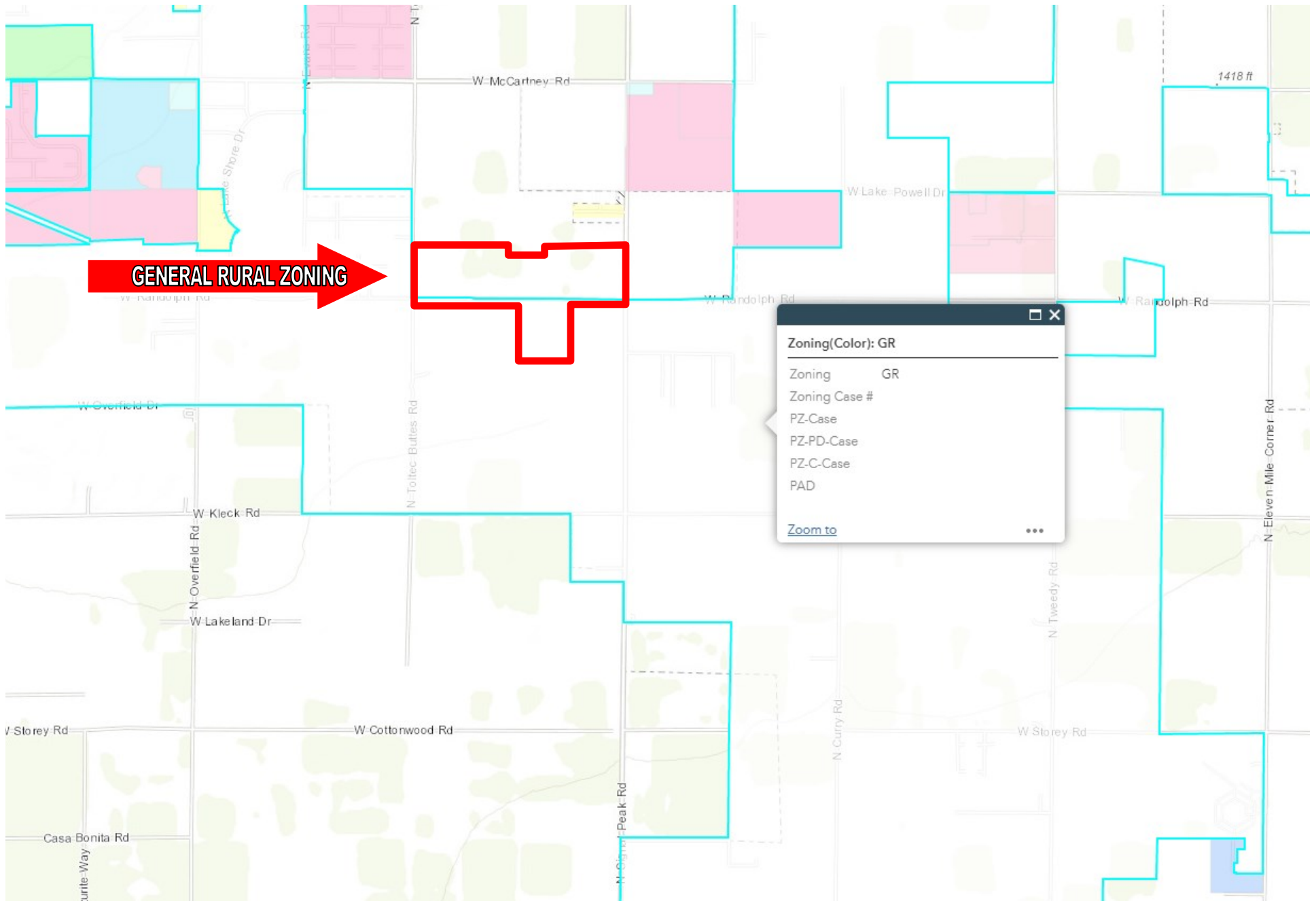
Location:	SWC of Signal Peak and Randolph Roads Pinal County, AZ
Acreage:	190 Acres
APN:	401-06-009D
Zoning:	GR Pinal County
Utilities:	Electric: Electric District #2 Telephone: Qwest Communications Natural Gas: Southwest Gas Water: Arizona Water Company Sewer: Septic
Price:	\$1,995,000.00 (\$10,500 Per Acre)

All Information contained herein is from sources deemed reliable but not guaranteed. Buyer should be satisfied as to the accuracy of all data. Offer subject to prior sale, price change or withdrawal.

SITE AERIAL 2



PINAL COUNTY ZONING MAP



PROXIMITY MAP TO PHX

